

NICHIAS OMEGA FLOOR™





TOMBO™ No. 6473

NICHIAS OMEGA FLOOR™ is a safe and secure raised access floor system that provides excellent performance and has a proven track record of installation in many buildings.

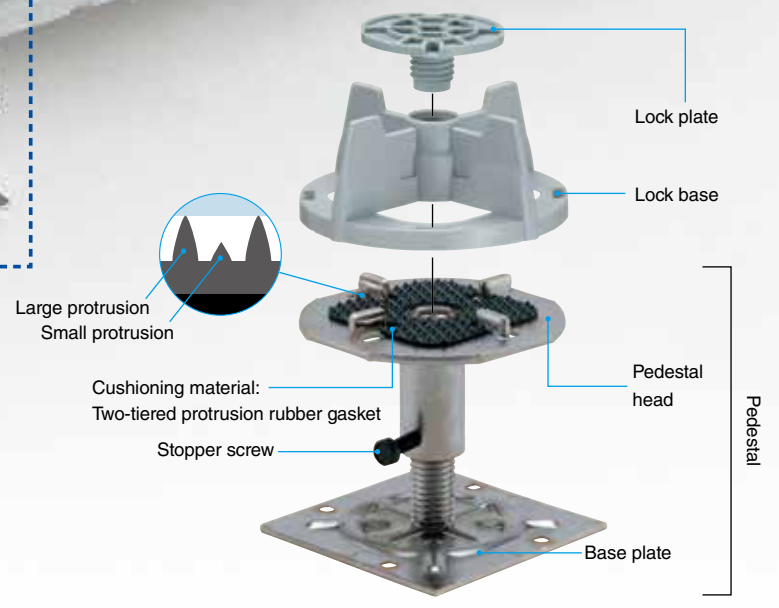
1. Proven track record of installation in many buildings

Since its release in 1990, NICHIAS OMEGA FLOOR™ has been installed in many buildings and built a solid track record. Renowned for its ease of installation, excellent performance and economy, the raised access floor system boasts a proven record of installations on many sites including buildings in large-scale re-development areas.

2. High-strength panel using reinforcing bars and laths

A unique reinforcing bar structure and laths are used in concrete to prevent crack, thus realizing a tough and high-strength concrete panel while providing solid walking feel that is comparable to walking on a concrete slab floor.

**"TOMBO" is a registered trademark or trademark of NICHIAS Corporation.
*Names with a TM symbol are trademarks of NICHIAS Corporation.



3. Solid walking feel without rattling

The panel lock system incorporates a two-tiered protrusion rubber gasket which absorbs rattles that have plagued conventional raised access floor systems and reduces squeaking noise and hollow sound. This structure also ensures a natural, comfortable walking feel and reduces foot fatigue for office workers.



4. Raised access floor system with excellent cost performance

Offers various excellent properties at low cost, creating a comfortable office environment at reasonable cost.

Panels

The base material is reinforced with steel bars and laths. Type "0 (zero)" and type "PKC" with cutouts for wiring can be freely combined.

■ **Standard panel** Type 0 (zero)



■ **Standard panel** Type PKC



Standard grommet cover lid for type PKC



Examples of wiring outlet

Panel specifications

Model No.	Type	Design concentrated load (N)	Size (mm)	Thickness (mm)	System weight (kg/m ²) ^{Note 1}	Panel weight (kg/panel)
M300A	0 (zero)	3,000	(500 mm finish size module) 497.5×497.5	corner: 31.5	48	11.5
	PKC					
HG ^{Note 2}	0 (zero)	5,000	(500 mm finish size module) 497.5×497.5	corner: 33	54	13.0
	PKC					

Note 1: For pedestal height of 100 mm. Not including floor coverings.

Note 2: OMEGA FLOOR™ HG is a made-to-order product.

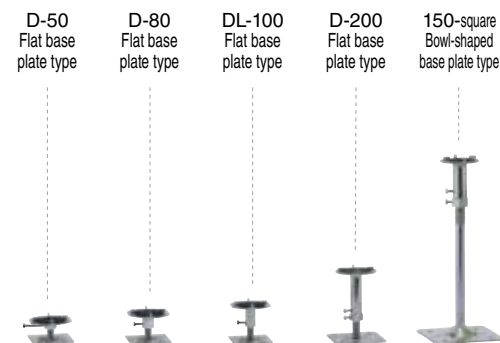
Note 3: Color unevenness, Small bubbles may occur on the surface without causing problem in terms of performance.

Pedestals

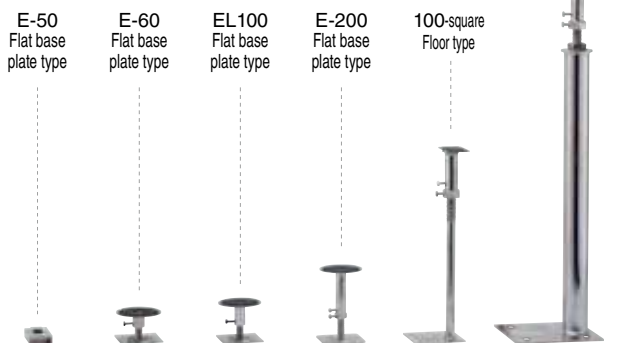
A full lineup of finish floor height from 60 to 1,000 mm

Finish floor height from 300mm to 1,000mm are made to order. Consult NICHIAS for details.

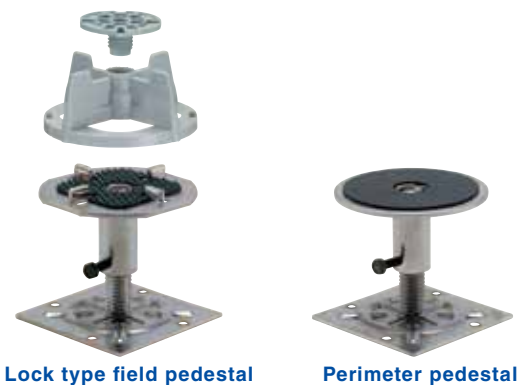
[Field pedestal]



[Perimeter pedestal]



[Types of pedestals]



Lock type field pedestal

Perimeter pedestal

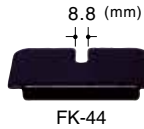
Finish height	Pedestal type	
	Field pedestal	Perimeter pedestal
60mm	D-50 flat base type	E-50 flat base type
80mm	D-80 flat base type	E-80 flat base type
100mm	DL-100 flat base type	EL-100 flat base type
125mm	DL-125 flat base type	EL-120 flat base type
150mm	DL-150 flat base type	E-150 flat base type
200mm	D-200 flat base type	E-200 flat base type
300mm	150-square bowl-shaped base plate type	100-square floor type
~1000mm	Pipe stud type	Pipe stud type

Optional panel

Optional panel Type PKR



Cover lid for optional panel



Up outlet



Manufacturer : TERADA ELECTRIC WORKS Co.,Ltd. (NAS70000)

Pedestal types

Pedestals are made to order. Consult NICHIAS for details.

[Security system]

Panels are locked using special screws. This system enhances security since the panels cannot be opened or closed with an ordinary screwdriver or Allen wrench.



[Whisker prevention]

To prevent the formation of zinc whiskers (Note 1), the pedestal has standard nickel plating.

Note 1: Zinc whiskers are hair-like conductive crystals that are formed on zinc-plated electrical parts. These whiskers adversely affect computers and electronic devices.



Grill

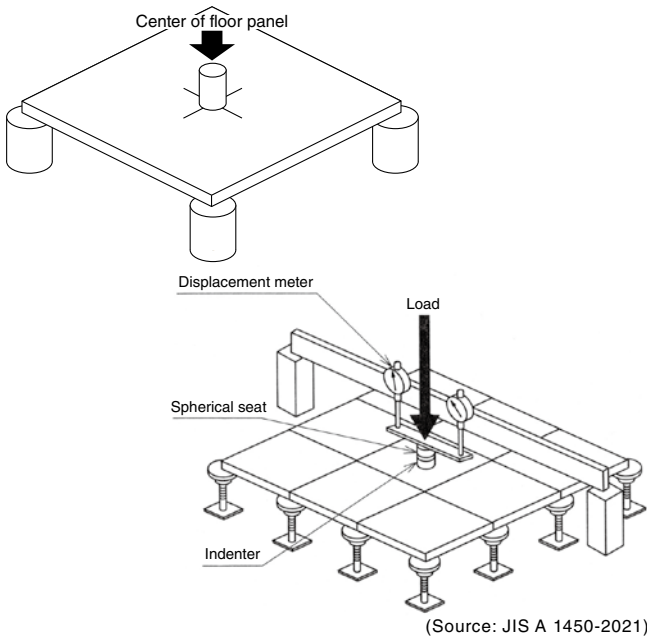
Grills are made to order. Consult NICHIAS for details.

There are a variety of grills that have various materials, sizes and open rates. Appropriate grills can be selected according to office applications.



Product	Size	Open rate	Material	Remarks
GP-40	500x500mm	75%	Steel	
GP-41	500x500mm	0 to 62%	Steel	With damper
GP-64	500x250mm	37%	Steel	Bolt pedestal

Concentrated load test



A floor panel is supported with four supports for static load testing. A load is applied using a load tester and a loader of 50 mm diameter.

Static load test

Model	Loading point	Maximum load	Deformation volume
M300A	Center of panel	9,000 or more	2 mm or less at 3000 N
HG		10,000 or more	2 mm or less at 5000 N

In-house standard

Each of four corners of a floor panel is supported with a pedestal, and load is applied using a load tester and a loader of 50 mm diameter.

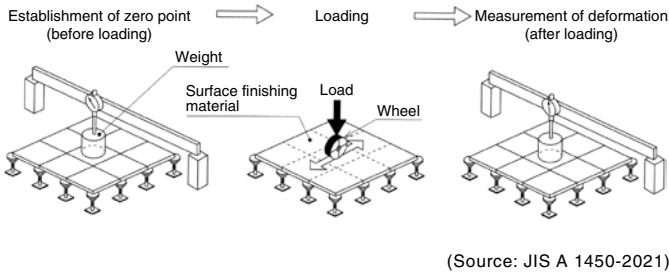
Static load test (Test method: JIS A 1450-2021)

Model	Specified load	Loading point	Deformation volume accompanied with specific load	Residual deformation volume
M300A	3000 N	Weakest points*	5 mm or less	3 mm or less
HG	5000 N			

In-house standard

*The weakest points are the point where the largest deformation is caused when the specific load is applied and the point where the largest residual deformation is caused. (The two points may coincide.)

Rolling load test



A urethane-covered caster (diameter of 150 mm, width of 40 mm, hardness of 85 HS or higher) with a specified load is rolled.

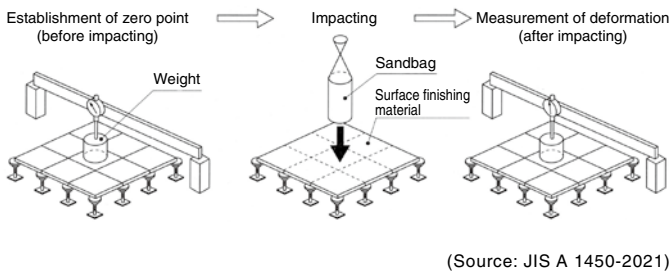
Rolling load test (Test method: JIS A 1450-2021)

Model	Specified load	Loading point	Visual damage	Residual deformation volume
M300A	1000 N	Weakest point	None	3 mm or less
HG				

In-house standard

*The weakest point is the point where the largest deformation is caused by the rolling load.

Impact test



A sand bag of 30 kg (with a bottom diameter of 220 mm) is dropped from a height of 250 mm.

Impact test (Test method: JIS A 1450-2021)

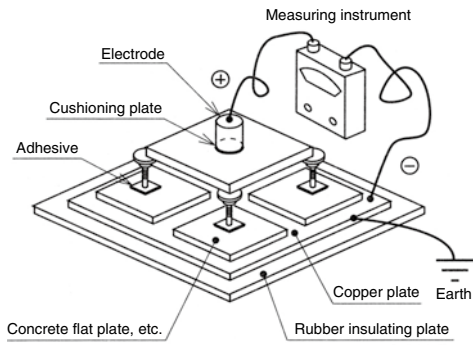
Model	Impactor	Impactor height	Impact point	Visual damage	Residual deflection
M300A	Sandbag with a mass of 30kg	250mm	Weakest point	None	3 mm or less
HG					

In-house standard

*The weakest point is the point with the largest deformation caused by impact.

JIS: Japanese Industrial Standards

Leakage resistance test



(Source: JIS A 1450-2021)

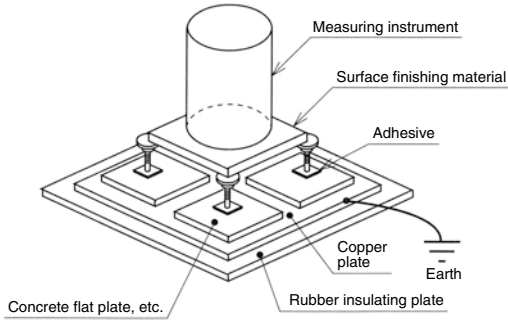
Resistance between the panel top and ground is measured. (Measurement conditions: applied voltage: 500 V; temperature: 20±5°C; humidity: 30±10% RH)

Leakage resistance test (Test method: JIS A 1450-2021)		
Model	Floor panel surface	Leakage resistance (Ω)
M300A	Bare finish (without covering)	1×10 ⁶ or more
HG		

In-house standard

Electrostatic propensity test

The maximum charge potential between the panel top and ground, and the time for reduction by half are measured using a measuring instrument specified in JIS A 1455. The U value is determined using the formula specified in JIS A 1455.



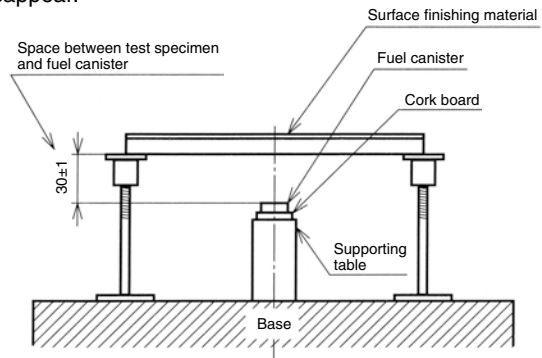
(Source: JIS A 1450-2021)

Electrostatic propensity test (Test method: JIS A 1450-2021)		
Model	Floor panel surface	U value
M300A	Bare finish (without covering)	0.6 or more
HG		

In-house standard

Combustion test

Fuel is burnt below a panel, and the time is measured from when the fuel is burnt out until when flames on the panel disappear.



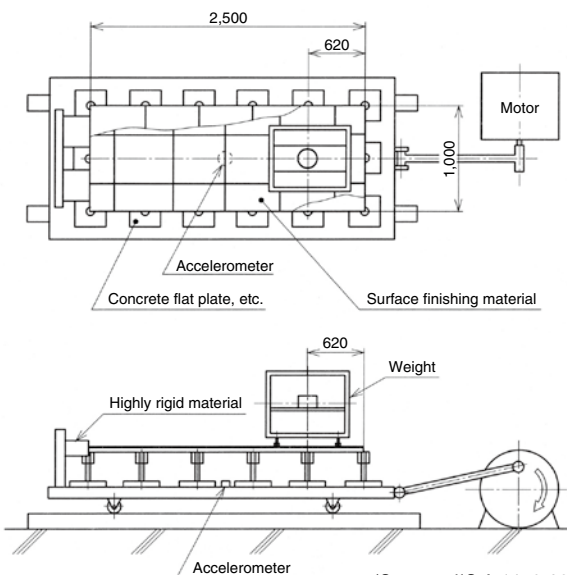
(Source: JIS A 1450-2021)

Combustion test (Test method: JIS A 1450-2021)	
Model	Afterflame time
M300A	0 seconds
HG	

In-house standard

Vibration test

A weight of 350 kg is placed on a test piece, and a sine-wave vibration of 2 Hz is applied 3 times.



(Source: JIS A 1450-2021)

Note: The pedestal type varies depending on the applied load.

Vibration test (Test method: JIS A 1450-2021)		
Model	Load mass	Result
M300A	350kg	Floor panels should not come off.
HG		

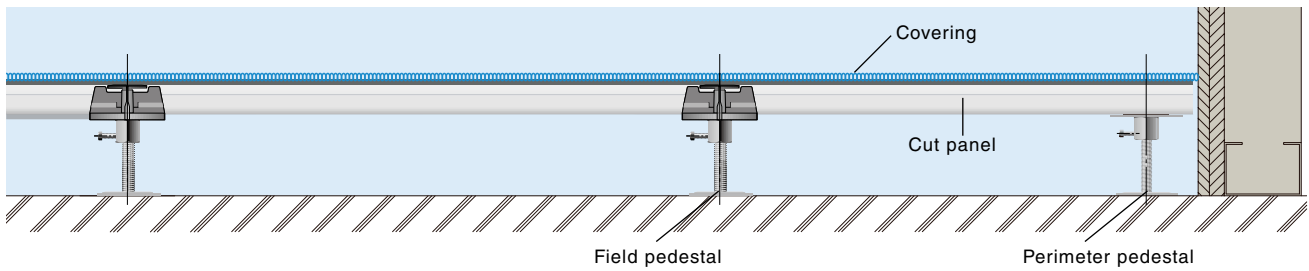
Testing organization: Floor Materials and Construction Research Institute

Mass of specified weight	Applications	Underfloor strength
150kg	The case where setting of a lightweight fixture and furniture is assumed (e.g. ordinary offices)	3000N/m ²
200kg	The case where setting of a common book shelf and fixture and furniture is assumed (e.g. ordinary offices)	
350kg	The case where setting of heavy load such as a large book shelf and equipment including a pint-sized server is assumed (Heavy-duty zone)	5000N/m ²

Notes

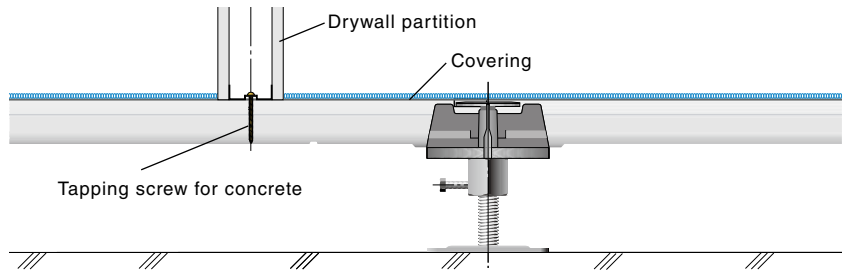
- Specified load is not related to underfloor strength. These data items are given here for reference considering the current usage.
- Data source: "Performance Assessment of Raised Access Floor System" by Japan Access Floor Association

Cross section



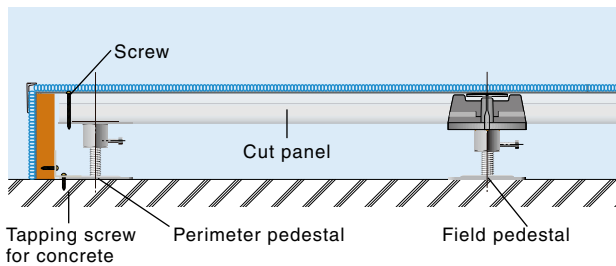
Drywall partition (separate work)

A drywall partition can be secured with screws by drilling screw holes in NICHIAS OMEGA FLOOR™ panels.

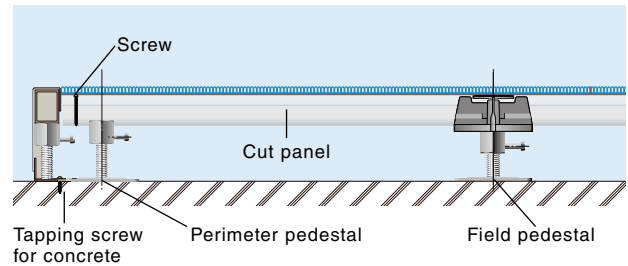


* Fire-resistant drywall partitions cannot be installed on NICHIAS OMEGA FLOOR™ panels.

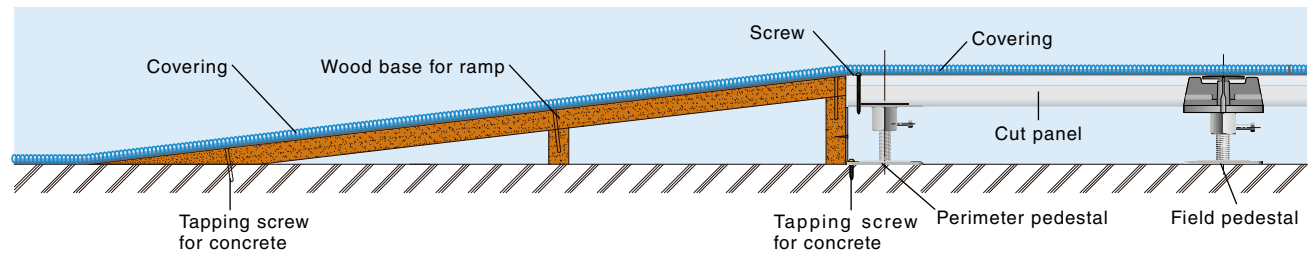
Fascia (wood base)



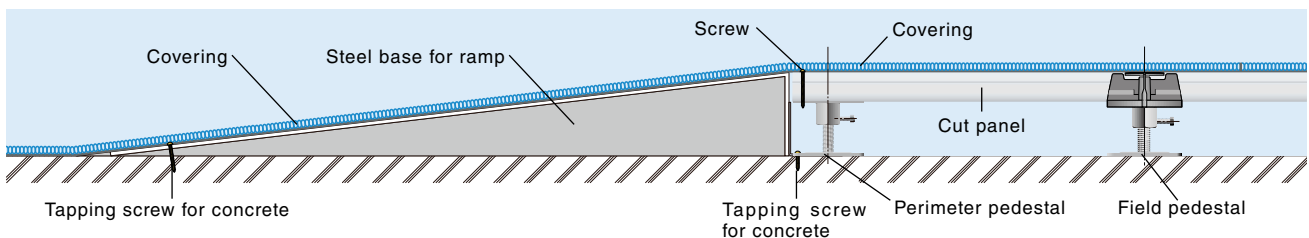
Fascia (stainless steel)



Ramp (wood base)



Ramp (steel base)



Working on perimeters

When panels of the same material are used

Cut and install NICHIAS OMEGA FLOOR™ (Type 0) panels.

- Use perimeter pedestals in places close to a wall.
- Install the panels, leaving a clearance of 2 to 4 mm from the wall.
- Panels are cut while pouring water on them. Water supply is required in the work place and appropriate measures are required to prevent the surrounding area from becoming dirty.



Lock type field pedestal

Perimeter pedestal

Ramps and fascias



Fascia (wood base)



Fascia (stainless steel)

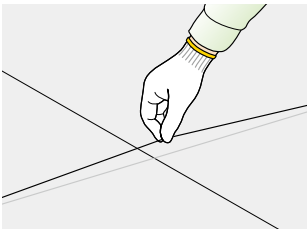


Ramp (wood base, steel base)

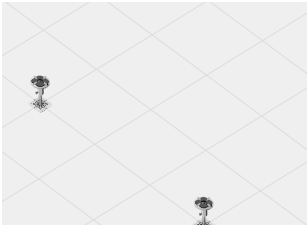


Ramp (wood base, steel base)

Installation Procedure



STEP1
Mark the reference lines on the concrete floor in accordance with the building standard marks and the working drawings.



STEP2
Adjust the height of the reference pedestals with a leveler, etc.

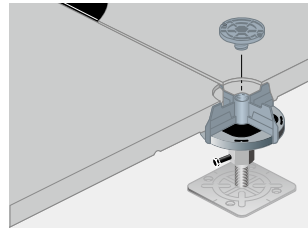


STEP3
Adjust the height of other pedestals to the reference pedestals with a long bar, etc., then fix the height with the stoppers.

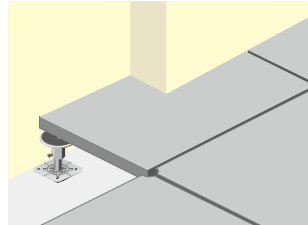


STEP4
Apply adhesive to the bottom of the base plate of each pedestal with a lock base, then install the pedestals according to the reference lines.

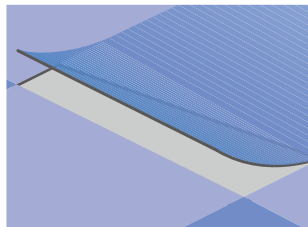
*When applying paint to the concrete slab, consult the paint manufacturer regarding the slab conditions for applying the paint, the curing time before bonding pedestals, etc.



STEP5
When the installation of the pedestals is complete, immediately put the floor panels (type O or type PK) on the pedestals according to the layout plan, then tighten with lock plates.



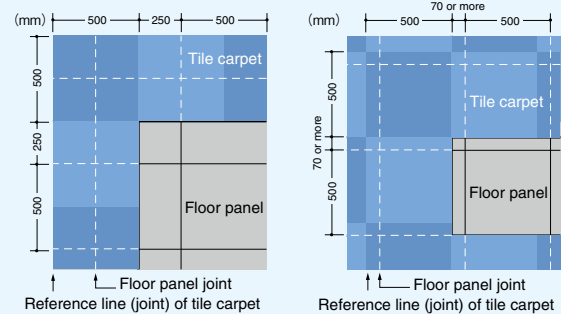
STEP6
Install the floor panels at the perimeters.



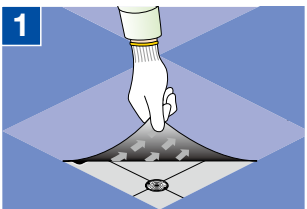
STEP7
Install carpet tiles or other coverings. (Be sure to install floor coverings immediately after installing the floor panels.)

*The recommended quantity of carpet bond (peel-up type adhesive) to be applied is 30 to 60 g/m². Refer to the installation specifications of the manufacturer for detailed instructions. Applying too much carpet bond may damage the carpet due to excessive viscosity.

[Layout example of tile carpet]

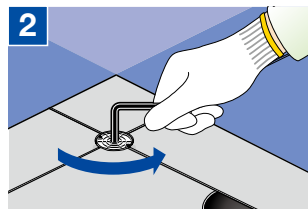


Maintenance

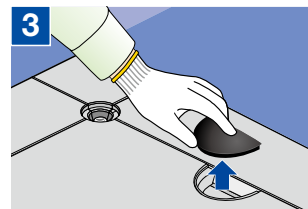


1
Pull up a corner of the floor covering (such as tile carpet) and remove the four sheets of covering that cover the floor panel to be opened and closed.

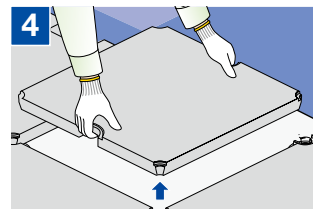
* Since the floor covering has a specific direction, record its position and direction for reinstalling it later.



2
Remove the lock plate with a hexagonal wrench.



3
Remove the grommet cover lid.



4
Hold the panel with both hands and lift it straight up.

* Record the position and direction of the panel for reinstalling it later.

Precautions

- ⚠ Warning**
 - ⊘ Do not drop heavy objects or apply excessive impact. Doing so could damage the panels or cause them to break off.
 - ⊘ Do not machine the panels or pedestals without permission. Doing so will weaken them and could damage the panels or cause them to break off.
 - ⚠ When carrying in, moving, or installing equipment, cover the stipulated areas and carry out the work at a calm pace. The panels may become damaged by subjecting them to an excessive load or impact.
 - ⚠ When installing the equipment, make sure that the installation area is larger than $\varnothing 50$ mm and the load applied to one panel is less than the permissible concentrated load.
 - ⚠ Do not leave the panels removed for wiring work, etc. unattended. Doing so could cause a visiting third party to be unexpectedly injured. Take safety measures such as sectioning off the removed panels, etc.
- ⚠ Caution**
 - ⚠ Do not use the floor panels without a cover lid. Doing so could cause an unexpected injury such as one's foot entering the uncovered hole.
 - ⚠ When handling panels and pedestals, wear gloves to prevent being cut.
 - ⚠ When laying panels, be careful not to get your hands caught between the panels.
 - ⚠ Do not carry panels while holding them with the panel lifter used when attaching/detaching the panels. The panels may fall and cause an unexpected injury.
 - ⚠ Wear protective gloves and a dust mask when machining the panels or cutting the clipboard after checking with NICHIAS that it is okay to do so.

General Precautions

Design Precautions

- Do not use for applications other than raised-access floor systems.
- Do not use the panels in an uncovered state, as doing so may cause the panels to chip or scrape away, wear or stains due to aging, or an accident in which someone trips or sprains their ankle.
- If the panel joints are separated by gaps, finishing with a long sheet may cause the joints to stand out. Do not use long sheets.
- If the panel joints are separated by gaps, finishing with loose-laying PVC tiles may cause the joints to stand out. Do not use loose-laying PVC tiles.
- If the room is not used for a long time after the panels are installed, condensation may occur under the panels. Ventilate the room and under the floor regularly.
- If the room is not used for a long time after the particle board is installed, dew condensation may occur and the board may swell or mold may form. Regularly ventilate the room or under the floor to prevent this from happening.
- As the surface may become dry and shrink, do not leave the panels for more than 6 months without applying the surface finishing materials.
- For equipment that is repeatedly subject to loads or vibrations such as heavy-duty mobile racks and rotary presses, mount it on a frame or the like directly on a concrete slab, and isolate it from the panels.
- When installing a door on panels, make sure to reinforce the panels with the reinforcement pedestals because the panels may suffer deflection, affecting the ability to lift them up and/or place them back.
- If you install partitions on the panels, the panels may suffer deflection and cause problems. If you require reinforcement for the panels, etc., please contact NICHIAS.

Installation Precautions

- Follow the instructions in the catalog when installing.
- Consider attaching and detaching the panels when wiring, and lay the carpet in a block-like pattern with each piece deviating by 70 mm or more.
- When laying a tile carpet, an unpleasant smell may be generated by the reaction between the rubber plasticizing agent on the back of the carpet and the alkaline water contained in the panel. Ventilate the area sufficiently after laying down the carpet.
- Use approximately 30 to 60 g/m² of carpet bond when installing the tiled carpet. If you apply too much bond, it may get into the joints of the panels, making them difficult to lift up and/or put back, or cause a creaking sound to occur from the panels. Also, the carpet may get damaged when attaching or detaching the panels.
- When storing panels, pedestals, and auxiliary materials, store them somewhere where they will not be exposed to water. Exposure to water may cause rust to develop.
- When transporting heavy objects or construction materials by trolley, to avoid applying excessive local loads, lay down wooden board coverings along the route that the trolley will pass according to the criteria shown in the table below.

Heavy items	Covering method
300 kg or less	Around 2 mm of plywood board or plastic sheet coverings
Over 300 kg and under 500 kg	9 mm wooden material covering
Over 500 kg and under 1,000 kg	21 mm wooden material covering

- Do not drag the panels together as doing so could leave marks.
- Border panels for flow lines such as passages and entrances/exits should be fixed in place with screws.
- Make sure to fix the stopper screws on the pedestals to prevent the panels from rattling.
- Secure a gap of about 2 mm so that the order-made panels near the wall do not rub against the wall. In corridors and other walkways, take measures to prevent displacement such as screwing and installing backup materials.

Precautions for Carrying In and Installing Heavy Equipment

- When moving or transporting heavy objects, to avoid applying excessive local loads, lay down wooden board coverings, such as the ones indicated in the table above, along the route.
- Equipment which may fall over should be fixed to the concrete slab or a durable wall and not fixed to the panel or pedestals.
- If a load is concentrated on one panel, lay an iron plate or frame on the panel to spread the load.

Precautions when Opening and Closing the Panels Such as When Doing Wiring Work

- When removing a panel, install the lock parts (plate and base) and cover lid back as they were beforehand.
- When removing a panel, return the panel to its original orientation to prevent rattling.
- Please contact one of our sales representatives when a modification or replacement of floor materials is required due to a layout change or wiring work.

Cleaning Precautions

- As part of daily maintenance for the tile carpet, clean with a large industrial vacuum cleaner or household vacuum cleaner.
- As part of periodic maintenance, conduct powder cleaning.
- Make sure that water or chemicals are not spilled on the panels.
- Ask a cleaning company or the surface finishing material manufacturer for methods on powder cleaning and stain removal.

Disposal Precautions

- Panels, pedestals, and auxiliary materials should be classified as general industrial waste and should be treated appropriately in accordance with the Waste Disposal and Public Cleansing Law.



Head Office

6-1, Hatchobori 1-chome, Chuo-ku, Tokyo 104-8555, Japan
International Marketing and Sales Group
 Phone: 81-3-4413-1132 Fax: 81-3-3552-6108
 Web Site: <https://www.nichias.co.jp/>

Overseas Sales Companies

Indonesia

PT. NICHIAS SUNIJAYA

Panin Life Center, 2nd Floor, Room 205, Jl. Letnan Jenderal S. Parman
 Kav. 91, Jakarta 11420, Indonesia
 Phone: +62-21-56956207 Fax: +62-21-56956208/56956209

Malaysia

NICHIAS SOUTHEAST ASIA SDN. BHD.

Suite A1102, 11th Floor, West Wing, Wisma Consplant 2,
 No. 7, Jalan SS 16/1, 47500 Subang Jaya, Selangor Darul Ehsan, Malaysia.
 Phone: +60-3-5636-4067 Fax: +60-3-5636-4078

Singapore

NICHIAS SINGAPORE PTE. LTD.

25 International Business Park, #01-15/17 German Centre,
 Singapore 609916
 Phone: +65-6571-0830/0838 Fax: +65-6265-7681

Vietnam

NICHIAS VIETNAM CO., LTD

Room 709, Elite Business Center, 7th Floor Diamond Flower Building,
 48 Le Van Luong Street, Nhan Chinh Ward, Thanh Xuan District,
 Hanoi, Vietnam
 Phone: + 84-24-6664-3136 Fax: + 84-24-6666-8168

Thailand

NICHIAS (THAILAND) CO., LTD.

85 Moo 1, Wellgrow Industrial Estate T. Homsin, A. Bangpakong
 Chachoengsao 24180, Thailand
 Phone: +66-38-570-600 Fax: +66-38-570-601

THAI NICHIAS INTERNATIONAL CO., LTD.

Unit 1107, 11th Floor, AIA Capital Center
 89 Ratchadaphisek Road, Dindaeng, Dindaeng, Bangkok 10400 Thailand
 Phone: +66-2-001-2060 Fax: +66-2-001-2062

China

NICHIAS (SHANGHAI) TRADING CO., LTD.

霓佳斯（上海）贸易有限公司
 Room 1701, THE PLACE, Tower A, No. 100 Zun Yi Road,
 Changning District, Shanghai, P.R.China Postcode 200051
 中国上海市长宁区遵义路100号虹桥南丰城A栋1701室 邮编200051
 Phone: +86-21-6236-1783 Fax: +86-21-6236-1781

NICHIAS (SHANGHAI) TRADING CO., LTD. Guangzhou Branch

霓佳斯（上海）贸易有限公司 广州分公司
 17F-G, Gold Sun Building, No.109 Tiyu West Road, Guangzhou,
 Guang Dong Province, 510620, P.R.China
 中国广东省广州市天河区体育西路109号高盛大厦17楼G室 邮编 510620
 Phone: +86-20-3879-1640 Fax: +86-20-3879-1647

NICHIAS (SHANGHAI) AUTOPARTS TRADING CO., LTD.

霓佳斯（上海）汽车零部件贸易有限公司
 Room 1702, THE PLACE, Tower A, No. 100 Zun Yi Road,
 Changning District, Shanghai, P.R.China Postcode 200051
 中国上海市长宁区遵义路100号虹桥南丰城A栋1702室 邮编200051
 Phone: +86-21-6236-2668 Fax: +86-21-6236-2667

Germany

NICHIAS AUTOPARTS EUROPE GmbH

Prinzenallee 7, 40549 Düsseldorf, Germany
 Phone: +49 (0)211-52391-058 Fax: +49 (0)211-52391-200

Overseas Construction Companies

Malaysia

NICHIAS SOUTHEAST ASIA SDN. BHD.

Suite A1102, 11th Floor, West Wing, Wisma Consplant 2,
 No. 7, Jalan SS 16/1, 47500 Subang Jaya, Selangor Darul Ehsan, Malaysia.
 Phone: +60-3-5636-4067 Fax: +60-3-5636-4078

Thailand

THAI-NICHIAS ENGINEERING CO., LTD.

45 Huaypong-Nongbon Road, Huaypong, Muang Rayong,
 Rayong Province 21150, Thailand
 Phone: +66-38-682-242 Fax: +66-38-691-156

Overseas Factories

Indonesia

PT. NICHIAS ROCKWOOL INDONESIA

PT. NICHIAS METALWORKS INDONESIA

Malaysia

NICHIAS FGS SDN. BHD.

NT RUBBER-SEALS SDN. BHD.

Vietnam

NICHIAS HAIPHONG CO., LTD.

China

SUZHOU NICHIAS INDUSTRIAL PRODUCTS CO., LTD.

(苏州霓佳斯工业制品有限公司)

SUZHOU NICHIAS SEAL MATERIAL CO., LTD.

(苏州霓佳斯密封材料有限公司)

SHANGHAI XINGSHENG GASKET CO., LTD.

(上海兴盛密封垫有限公司)

SUZHOU SHUANGYOU AUTOPARTS CO., LTD.

(苏州双友汽车零部件有限公司)

India

NICHIAS INDUSTRIAL PRODUCTS PRIVATE LTD.

Czech

NICHIAS AUTOPARTS EUROPE a.s.

Mexico

NAX MFG, S.A.DE C.V.

⚠ Cautions

- The products included in this catalog are intended for common use, including those presented in the catalog. If you intend to use any of the products in a way that requires extremely high quality and reliability such that any possible defect may directly affect the safety of human lives, please make sure to consult with our company in advance and take necessary measures at your responsibility.
- Because the stated material values may vary according to actual usage environments or circumstances, please consider such figures as indications for reference.
- The content of the catalog explains the features of the products when they are used alone. When actually using the products, please start using them after testing them under the actual usage environment.
- The content of the explanation of the products may be modified without any advance notice, and the production of the product may also be discontinued without advance notice. Please obtain the latest version of the catalog, and confirm the content thereof. The date of issuance of this catalog is printed on this page.
- The standards, accreditation and provisions of laws included in the catalog may not conform with the latest version thereof.
- We strictly prohibit any acts of infringement upon our rights that are protected by the Copyright Act with regard to information included in the catalog, through the production of copies or imitations, misappropriation or unauthorized reprinting.
- Please be informed that, in the case where any problem involving a third party's industrial property right arises due to the use of any product included in the catalog, our company shall not be responsible for any problems other than the problems arising strictly due to reasons related to only such products.
- Please be aware that our company will not bear any responsibility for the following damage related to our products:
 - Damage arising due to natural disasters or accidents occurring for reasons that are not attributable to our company;
 - Damage arising due to remodeling, repairing or other acts by a third party;
 - Damage arising due to the willful intent or negligence of the customer or the user, or due to the improper use or use under abnormal conditions of the products;
 - Damage arising due to the failure to carry out regular checkups and appropriate repairs, maintenance and part replacements, considering various conditions, such as the usage conditions, usage environment and usage period, etc., of the product;
 - Indirect damage (including any operational damage, lost profits, opportunity losses, etc.) arising due to the use of or inability to use our company's product;
 - Damage arising due to a situation which was unforeseeable under the technical standards at the time of the shipment of our company's product; or
 - Damage arising due to reasons that are not attributable to our company.